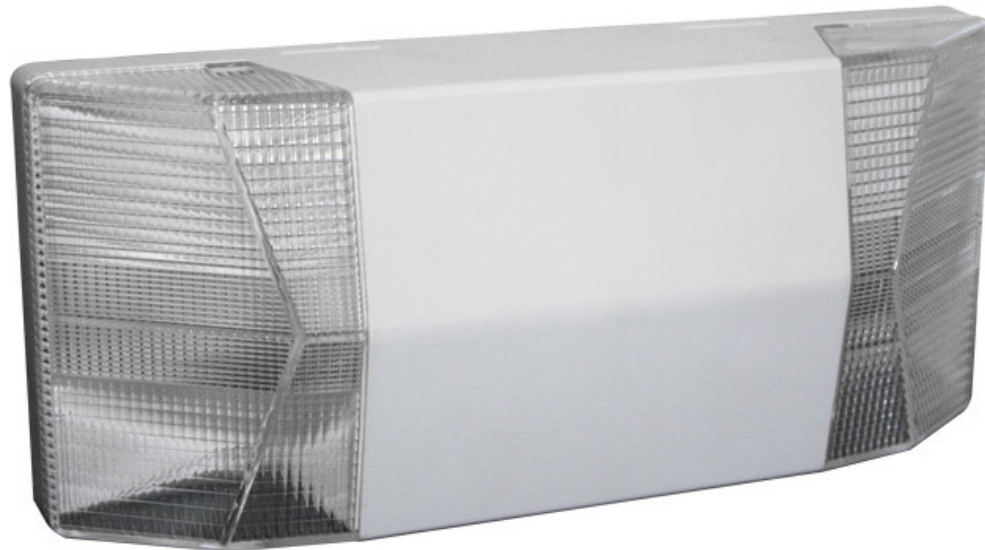


CPEL SERIES**LOW PROFILE HALOGEN COMPACT EMERGENCY LIGHT****OVERVIEW**

Our CPEL emergency light is one of the most compact and efficient emergency light available today. A nickel-cadmium battery provides emergency power illumination to (2) MR11 emergency lamps. The MR11 lamps produce 5W of halogen light, reducing the size of the unit and improving the maintenance profile.

The compact emergency light sealed lead acid battery lasts for 5-7 years.

The CPEL emergency light is constructed from white thermoplastic and features adjustable lamp heads that are gyroscopically mounted for easy positioning. The CPEL emergency light surface mounts to normally inflammable ceilings and walls.

A simple push button allows easy testing of the emergency light's sealed lead acid battery. The CPEL emergency light is UL Listed and comes complete with a five-year warranty.

EXTERNAL SPECIFICATIONS

The CPEL emergency light is constructed from flame and corrosion resistant ABS thermoplastic. The housing comes standard in white, and is also available in black.

The lamps are easy to adjust and are gyroscopically mounted so they can be positioned at the most ideal angle for illuminating the path of egress.

MR11 LAMP SPECIFICATIONS

The MR11 lamps for this emergency light use less than 5 watts of electricity to produce the same illumination levels as a standard 5.4 watt incandescent emergency lamp.

LED SPECIFICATIONS

- **Lamp Type:** Halogen MR11
- **Lamp Shape:** Round
- **Lamp Wattage:** 5W
- **Color Temperature:** 3500K
- **Lifespan:** 2,000+ Hours

ELECTRICAL SPECIFICATIONS

120/277V AC dual-voltage operation is standard. Other voltages available upon request such as 220V, 240V, and 480V.

SELF-DIAGNOSTIC TESTING (SDT OPTION)

SDT circuitry continuously monitors every critical function of the unit. Purchase the SDT option to eliminate the requirement of monthly/yearly manual testing of emergency lights/exit signs. SDT meets NFPA 101 Life Safety Code requirements for periodic testing.

REMOTE CAPABILITY (RC OPTION)

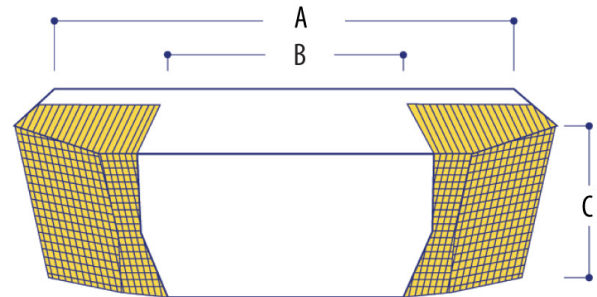
The CPEL Series RC option allows the fixture to operate multiple lamp heads that are located away from the fixture. Utilizing the remote capability option eliminates installation of more individual fixtures and decreases the number of batteries to be maintained.

BATTERY SPECIFICATIONS

The CPEL Series uses a 6V 4.5AH sealed lead acid emergency light battery. Provides a minimum 90 minutes of emergency power to the (2) Halogen MR11 emergency lamps.

ORDERING INFORMATION

Series	Housing	Options (may be combined)
CPEL	W (white) B (black)	RC (remote capability) SDT (self-diagnostic testing) CS10 (10-foot plug-in cord)



DIMENSIONS

Wattage	A	B	C
10.0 watts	11.5"	5.0"	3.00"

CODE COMPLIANCE

UL924 Listed for the U.S. and Canada, CS860, NFPA, Life Safety 101, UL Listed for Damp Locations. UL Listed for Damp Locations.



WARRANTY

This Halogen emergency light comes with a three-year factory warranty. The lamps are not covered. Deliberate damage, misuse, or improper installation effectively cancel the warranty. Battery features a 20% per year pro-rata warranty.